

ADMT
APMT

钻铣共用
有孔
铣削刀片

刀杆
刀盘

直角
台肩
立
铣刀

圆角
铣刀

球头
铣刀

钻铣
刀杆

倒角
刀杆

玉米
铣刀

三
面刃
槽刀

快
进给
系列

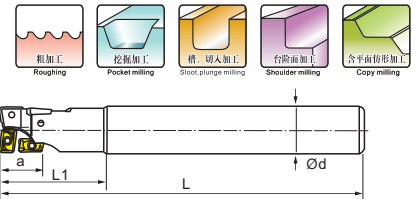
龙门
平面
铣刀

锁
牙式
刀柄

用途 Application	产品图片 Product Image	几何尺寸 Dimensioning	规格型号 Specification	尺寸 Dimension (mm)					配套刀柄 Matching Toolholder	P00 CBN-K CBN-S UN91 ZK01 ZC325 ZP201 ZP160 ZP162 ZP163
				r _c	A	B	T	a		
平面铣削 / 倒角加工 Face milling / Chamfering		底刃	ADMT 080308L 100308L 12T308L APMT 160408L 170408L 190508L 250508L	0.8 0.8 0.8 0.8 0.8 0.8 0.8	7.8 10.4 12.6 16.45 17.6 19.6 25.4	6.2 6.35 7.93 9.53 9.53 10 11	3.0 3.18 3.9 4.76 4.76 5.0 5.5	15 15 15 11 11 11 11	刀柄: (Toolholder) D43	• • • • • • • • •
平面铣削 / 倒角加工 Face milling / Chamfering		外周刃	APMT 090208R ACMT 100308R APMT 100320R 12T308R 12T320R 12T330R 150408R 150430R	0.8 0.8 2.0 0.8 2.0 3.0 0.8 3.0	9.1 10.1 10.1 13.14 13.14 13.14 15.88 15.88	5.1 6.35 6.35 7.93 7.93 7.93 9.53 9.53	2.6 3.4 3.4 3.9 3.9 3.9 4.76 4.76	11 7 7 11 11 11 11 11	刀柄: (Toolholder) D43	• • • • • • • • •

ASJ-4P 钻铣刀 Drilling and milling cutter

切削参数 (Cutting Parameters): R16
零配件 (Spare Parts): P01-P04

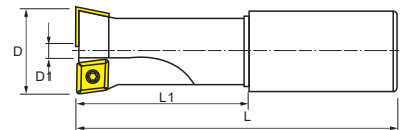


- 无底孔状态下由钻孔加工至立铣加工
- 底刃刀片角度较大, 加工阻力轻
- 刀片为四刃, 可做深粗铣加工
- Bottom-free state from drilling to milling process.
- At the end of blade edge angle of greater resistance to light processing.
- Four-edge blade, do the deep rough milling.

型号 Cat. No	尺寸 Size						刀片 Insert		螺钉 Screw	扳手 Wrench	Stock	Order Number	Price (RMB)
	D	d	L	L1	L2	a	底刃	外周刃					
ASJ16-17-160-4T	17	16	160	40	-	16	ADMT080308L	APMT09208R	M2.5×6/M2×5	T8/T6	•	332400	175
ASJ20-20-160-4T	20	20	160	40	-	20	ADMT1003□□L ACMT1003□□L		M2.5×6	T8	•	332402	200
ASJ20-20-200-4T	20	20	200	40	-	20					•	332404	215
ASJ20-21-160-4T	21	20	160	35	-	20	ADMT12T3□□L APMT12T3□□L		M3.5×7	T10	•	332406	200
ASJ20-21-200-4T	21	20	200	35	-	20					•	332408	215
ASJ25-25-160-4T	25	25	160	50	-	25	ADMT12T3□□L APMT12T3□□L		M3.5×7	T10	•	332410	230
ASJ25-25-200-4T	25	25	200	75	-	25					•	332412	250
ASJ25-25-250-4T	25	25	250	75	-	25	ADMT12T3□□L APMT12T3□□L		M3.5×7	T10	•	332414	270
ASJ25-26-160-4T	26	25	160	50	-	25					•	332416	230
ASJ25-26-200-4T	26	25	200	50	-	25	ADMT12T3□□L APMT12T3□□L		M3.5×7	T10	•	332418	250
ASJ25-26-250-4T	26	25	250	50	-	25					•	332420	270
ASJ25-30-160-4T	30	25	160	80	-	25	ADMT12T3□□L APMT12T3□□L		M3.5×7	T10	•	332422	240
ASJ25-30-200-4T	30	25	200	80	-	25					•	332424	260
ASJ32-30-250-4T	30	25	250	80	-	25	ADMT12T3□□L APMT12T3□□L		M3.5×7	T10	•	332426	280
ASJ32-33-160-4T	33	32	160	80	-	32					•	332428	250
ASJ32-33-200-4T	33	32	200	90	-	32	APMT1604□□L APMT1504□□L		M4×9	T15	•	332430	275
ASJ32-33-250-4T	33	32	250	120	-	32					•	332432	300
ASJ32-35-160-4T	35	32	160	80	-	32	APMT1604□□L APMT1504□□L		M4×9	T15	•	332434	250
ASJ32-35-200-4T	35	32	200	90	-	32					•	332436	275
ASJ32-35-250-4T	35	32	250	120	-	32	APMT1604□□L APMT1504□□L		M4×9	T15	•	332438	300
ASJ32-35-300-4T	35	32	300	120	-	32					•	332440	330
ASJ32-35-350-4T	35	32	350	120	-	32	APMT1604□□L APMT1504□□L		M4×9	T15	•	332442	375
ASJ32-35-400-4T	35	32	400	120	-	32					•	332444	400

CH 螺丝沉头孔铣刀 Screw Countersunk Head Milling Cutter

切削参数 (Cutting Parameters): R16
零配件 (Spare Parts): P01-P04



- 把传统的钻孔与沉头加工结合于一体, 一次加工完成, 大幅提高螺丝沉头孔的加工效率

型号 Cat. No	尺寸 Size						刃数 No. of flutes	刀片 Insert	螺钉 Screw	扳手 Wrench	Stock	Order Number	Price (RMB)
	D	D1	d	L1	L								
CH-8-14-C25	14	2.9	25	21	108	1	CCMT060204	M2.5×6	T8	•	332600	200	
CH-10-17.5-C25	17.5	5.3	25	26	115	2				•	332602	200	
CH-12-20-C25	20	7.8	25	30	120	2				•	332604	200	
CH-14-23-C25	23	10.8	25	34.5	126	2				•	332606	250	
CH-16-26-C32	26	8.5	32	39	132	2	CCMT09T308	M4×9	T15	•	332608	250	
CH-18-29-C32	29	11.5	32	43.5	139	2				•	332610	300	
CH-20-32-C32	32	14.5	32	59	144	2				•	332612	300	

CCMT 钻铣共用
CPMT 有孔
铣削刀片

用途 Application	产品图片 Product Image	几何尺寸 Dimensioning	规格型号 Specification	尺寸 Dimension (mm)				配套刀柄 Matching Toolholder	PCD CBN-K CBN-S CBN-5 NK01 ZC325 ZP201 ZP160 ZP162 ZP163
				r _c	A	T			
平面铣削 倒角加工 Flat milling Chamfering			CCMT 060204	0.4	6.35	2.38		刀柄: (Toolholder) D43-44	
			09T304	0.4	9.525	3.9			
			09T308	0.8	9.525	3.9			
			CPMT 090308	0.8	9.525	3.15			
			120408	0.8	12.7	4.76			
			120430	3.0	12.7	4.76			
平面铣削 倒角加工 Flat milling Chamfering			CPMT 080204Z	0.4	7.94	2.38		刀柄: (Toolholder) D43-44	
			090204Z	0.4	9.525	2.38			
			120308Z	0.8	12.7	3.15			
			160408Z	0.8	15.875	4.76			
			160430Z	3.0	15.875	4.76			
			190408Z	0.8	19.05	4.76			
			190430Z	3.0	19.05	4.76			

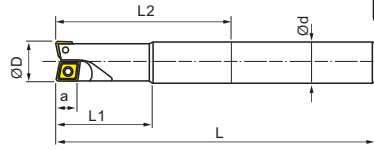
TJU 钻铣刀

Drilling And Milling Cutter

切削参数 (Cutting Parameters): R16
零配件 (Spare Parts): P01-P04



● 钻铣共用, 适用范围广
● 切削阻力小, 负荷轻



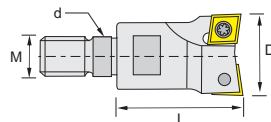
★ Drilling and milling shared wide scope of application.
★ Cutting resistance, the load light.

型号 Cat. No	尺寸 Size						刃数 No. of flutes	刀片 Insert	螺钉 Screw	扳手 Wrench	Stock	Order Number	Price (RMB)	Price (RMB)
	D	d	L	L1	L2	a								
TJU08-08-100-1T	8	8	100	30	-	6	1	CCMT 060204 CPMT 080204Z	M2.5×6	T8	●	332700	-	90
TJU10-10-100-1T	10	10	100	25	-	6	1				●	332702	67	90
TJU12-12-130-1T	12	12	130	30	-	6	1				●	332704	67	95
TJU16-16-120-2T	16	16	120	40	-	6	2	CCMT 060204 CPMT 090204Z	M2.5×6 M3.5×8	T8 T15	●	332706	93	110
TJU16-16-150-2T	16	16	150	50	-	6	2				●	332708	93	120
TJU16-16-200-2T	16	16	200	60	100	6	2				●	332710	110	150
TJU25-16-120-2T	17	16	120	40	-	6	2				●	332714	93	-
TJU16-17-150-2T	17	16	150	50	100	6	2				●	332716	93	120
TJU16-17-200-2T	17	16	200	60	100	6	2				●	332718	110	150
TJU20-20-120-2T	20	20	120	40	-	6	2				●	332720	107	-
TJU20-20-150-2T	20	20	150	50	-	6	2				●	332722	107	140
TJU20-20-200-2T	20	20	200	60	100	6	2				●	332724	127	150
TJU25-20-250-2T	20	25	250	60	-	6	2				●	332726	200	-
TJU20-21-150-2T	21	20	150	40	100	6	2				●	332728	107	140
TJU20-21-200-2T	21	20	200	50	-	6	2				●	332730	127	-
TJU25-25-150-2T	25	25	150	50	-	9	2	CPMT 090308 CPMT 120308Z	M4×9	T15	●	332732	133	160
TJU25-25-200-2T	25	25	200	60	-	9	2				●	332734	160	180
TJU25-25-250-2T	25	25	250	70	115	9	2				●	332736	200	195
TJU32-25-300-2T	25	32	300	70	-	9	2				●	332738	300	-
TJU25-26-150-2T	26	25	150	50	-	9	2				●	332740	133	160
TJU25-26-200-2T	26	25	200	60	115	9	2				●	332742	160	180
TJU25-26-250-2T	26	25	250	60	-	9	2	●	332744	200	-			
TJU32-32-150-2T	32	32	150	60	-	12	2	CPMT 120408 CPMT 160408Z	M5×12	T20	●	332746	200	200
TJU32-32-200-2T	32	32	200	60	-	12	2				●	332748	227	210
TJU32-32-250-2T	32	32	250	60	-	12	2				●	332750	267	220
TJU32-32-300-2T	32	32	300	60	165	12	2				●	332752	333	250
TJU32-32-350-2T	32	35	350	60	215	12	2				●	332754	400	-

TJUM 钻铣刀

Boring & Milling Cutter(TJUM)

切削参数 (Cutting Parameters): R16
零配件 (Spare Parts): P01-P04



型号 Cat. No	尺寸 Size				Teeth	刀片 Insert	螺钉 Screw	扳手 Wrench	Stock	Order Number	Price (RMB)
	D	L	d	M							
TJUM162M08	16	35	8.5	M8	2	CCMT060204 CPMT080204Z	M2.5X6	T8	●	332800	150
TJUM202M10	20	35	10.5	M10	2	CCMT060204 CPMT090204Z	M2.5X6/M3.5X8	T8/T15	●	332802	150
TJUM252M12	25	40	12.5	M12	2	CPMT090308 CPMT120308Z	M4X9	T15	●	332804	160
TJUM322M16	32	40	17	M16	2	CPMT120408 CPMT160408Z	M5X12	T20	●	332806	200

刀杆
刀盘

直角
台肩
立
铣刀

圆角
铣刀

球头
铣刀

钻铣
刀杆

倒角
刀杆

玉米
铣刀

三
面刃
槽刀

快
进给
系列

龙门
平面
铣刀

锁
牙式
刀柄