

倒角刀

机夹式倒角刀 Machine clip chamfering cutter

TCMT

正三角
有孔
多用途

用途 Application	产品图片 Product Image	几何尺寸 Dimensioning	规格型号 Specification	尺寸 Dimension (mm)				配套刀柄 Matching Toolholder	CBN K CBN S CN K01 CN K02 NC32S NP201 NP150 NP162 NP153 PL163
				rℓ	A	B	T		
倒角加工 Chamfering			TCMT 090204 110204 16T304	0.4 0.4 0.4	8.6 10 15.5	5.56 6.35 9.525	2.38 2.38 2.38	 刀柄: (Toolholder) D46	

刀杆
刀盘

直角
台肩
立
铣刀

圆角
铣刀

球头
铣刀

钻铣
刀杆

倒角
刀杆

玉米
铣刀

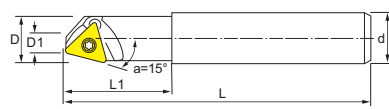
三
面刃
槽刀

快
进给
系列

龙门
平面
铣刀

锁
牙式
刀柄

SSO-15° 倒角刀 15° Chamfering

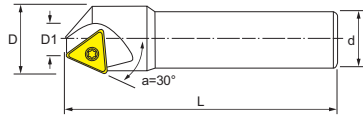


零配件 (Spare Parts): P01-P04

• 适合一般铣床, CNC铣床, CNC车床, 钻床倒角
★ Suitable for general milling machine, CNC milling machines, CNC lathes, drilling chamfering

型号 Cat. No	尺寸 Size						刃数 No. of flutes	倒角范围 Chamfering range	角度 Angle	刀片 Insert	螺钉 Screw	扳手 Wrench	Stock	Order Number	Price (RMB)
	D	d	D1	L1	L	a									
SSO-16-C16-110	16	16	11	30	110	15°	1	Ø11~Ø16	15°	TCMT1102..	M2.5x6	T8	●	333810	300

SSY-30° 倒角刀 30° Chamfering

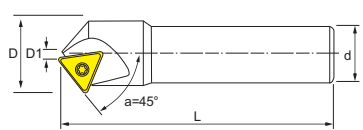


零配件 (Spare Parts): P01-P04

• 适合一般铣床, CNC铣床, CNC车床, 钻床倒角
★ Suitable for general milling machine, CNC milling machines, CNC lathes, drilling chamfering

型号 Cat. No	尺寸 Size						刃数 No. of flutes	倒角范围 Chamfering range	角度 Angle	刀片 Insert	螺钉 Screw	扳手 Wrench	Stock	Order Number	Price (RMB)
	D	d	D1	L1	L	a									
SSY-12-C12-110	12	12	3	30	110	30°	1	Ø3~Ø12	30°	TCMT0902..	M2.2x5	T6	●	333840	200
SSY-16-C16-110	16	16	5	30	110	30°	1	Ø5~Ø16	30°	TCMT1102..	M2.5x6	T8	●	333841	200
SSY-20-C20-130	20	20	5	30	130	30°	1	Ø5~Ø20	30°	TCMT16T3..	M4x9	T15	●	333843	200

TCM-45° 倒角刀 45° Chamfering

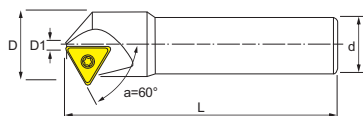


零配件 (Spare Parts): P01-P04

• 适合一般铣床, CNC铣床, CNC车床, 钻床倒角
★ Suitable for general milling machine, CNC milling machines, CNC lathes, drilling chamfering

型号 Cat. No	尺寸 Size						刃数 No. of flutes	倒角范围 Chamfering range	角度 Angle	刀片 Insert	螺钉 Screw	扳手 Wrench	Stock	Order Number	Price (RMB)
	D	d	D1	L1	L	a									
TCM-20-C12-110	20	12	5	30	110	45°	1	Ø5~Ø20	45°	TCMT16T3..	M4x9	T15	●	333830	200
TCM-20-C16-110	20	16	5	30	110	45°	1	Ø5~Ø20	45°				●	333832	200
TCM-25-C20-110	25	20	5	30	110	45°	1	Ø5~Ø25	45°				●	333834	200
TCM-30-C20-110	30	20	10	30	110	45°	1	Ø10~Ø30	45°				●	333836	250
TCM-40-C20-110	40	20	18	30	110	45°	2	Ø18~Ø40	45°				●	333838	300

SSH-60° 倒角刀 60° Chamfering



零配件 (Spare Parts): P01-P04

• 适合一般铣床, CNC铣床, CNC车床, 钻床倒角
★ Suitable for general milling machine, CNC milling machines, CNC lathes, drilling chamfering

型号 Cat. No	尺寸 Size						刃数 No. of flutes	倒角范围 Chamfering range	角度 Angle	刀片 Insert	螺钉 Screw	扳手 Wrench	Stock	Order Number	Price (RMB)
	D	d	D1	L1	L	a									
SSH-15-C12-110	15	12	4	30	110	60°	1	Ø4~Ø15	60°	TCMT0902..	M2.2x5	T6	●	333820	200
SSH-18-C16-130	18	16	4	30	130	60°	1	Ø4~Ø18	60°	TCMT1102..	M2.5x6	T8	●	333822	200
SSH-25-C20-130	25	20	5	30	130	60°	1	Ø5~Ø25	60°	TCMT16T3..	M4x9	T15	●	333824	200

ADNT 倒角加工 有孔 铣削刀片

切削形态:		● 稳定切削	● 一般切削	✦ 不稳定切削
Cutting Environment		Stable Cutting	General Cutting	Unstable Cutting
P	钢	Steel	●	● ● ● ● ● ● ● ●
M	不锈钢	Stainless Steel	●	● ● ● ● ● ● ● ●
K	铸铁	Iron	●	● ● ● ● ● ● ● ●
N	铝/铜/镁/锌/塑料/木材	Aluminum/Copper/Magnesium/Zinc/Plastic/Wood	●	● ● ● ● ● ● ● ●
S	硬质合金/粉末冶金	Carbide/Powder Metallurgy	●	● ● ● ● ● ● ● ●
H	钛/高温合金/碳纤维	Titanium/Superalloy/Carbon Fiber	●	● ● ● ● ● ● ● ●

用途 Product Image	几何尺寸 Dimensioning	规格型号 Specification	尺寸 Dimension (mm)					配套刀柄 Matching Toolholder	P0D CBN-K CBN-S ZK01 ZC32S ZP201 ZP150 ZP162 ZP163
			r _c	A	B	T	a		
直角台肩铣削 		ADNT 160308SR	0.8	15.875	9.525	3.18	15°	刀柄: (Toolholder) D23,D47	● ● ●

刀杆
刀盘

直角
台肩
立
铣刀

圆角
铣刀

球头
铣刀

钻头
刀杆

倒角
刀杆

玉米
铣刀

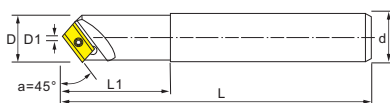
三
面刃
槽刀

快
进给
系列

龙门
平面
铣刀

锁
牙式
刀柄

SSK-45° 舍弃式倒角刀 SSK45° Discarding Chamfering



- 本铣刀可45° 切削, 亦可做倒角, V槽切削
- 适合一般铣床, CNC铣床, CNC车床, 钻床倒角

- ★ This cutter can be 45° cutting, chamfering can be done.
- ★ Suitable for general milling machine, integrated machining center.

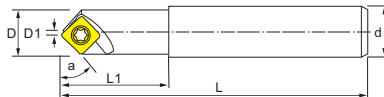
零配件 (Spare Parts): P01-P04

型号 Cat. No	尺寸 Size						刃数 No. of flutes	倒角范围 Chamfering range	角度 Angle	刀片 Insert	螺钉 Screw	扳手 Wrench	Stock	Order Number	Price (RMB)
	D	d	D1	L1	L	a									
SSK-20-C20-130N	20	20	8	30	130	45°	1	Ø8~Ø20	45°	AD..1603..	M4x8	T15	●	333700	200

SPMW SDMB 倒角加工 有孔 铣削刀片

用途 Product Image	几何尺寸 Dimensioning	规格型号 Specification	尺寸 Dimension (mm)					配套刀柄 Matching Toolholder	P0D CBN-K CBN-S ZK01 ZC32S ZP201 ZP150 ZP162 ZP163
			r _c	A	B	T	a		
直角台肩铣削 		SPMW 090304 SDMB 26152	0.4	9.525	9.525	3.18	11°	刀柄: (Toolholder) D47	● ● ●
			0.4	8.3	8.3	2.5	15°		● ● ●

SB-45° 倒角刀 Chamfering



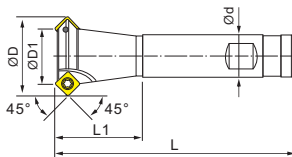
- 用于内外倒角加工, 端面槽加工
- 刀片形状为正方形, 使用时可转位4次, 更经济

- ★ For internal and external chamfering processing, end-groove.
- ★ Blade shape is square, use indexable four times more economical.

零配件 (Spare Parts): P01-P04

型号 Cat. No	尺寸 Size						刃数 No. of flutes	倒角范围 Chamfering range	角度 Angle	刀片 Insert	螺钉 Screw	扳手 Wrench	Stock	Order Number	Price (RMB)
	D	d	D1	L1	L	a									
SB-16-C16-110	15	16	3	30	110	45°	1	Ø3~Ø15	45°	SPMW0903	M4x8	T15	●	333820	200
SD-03-C12-110	12	12	4	30	110	45°	1	Ø4~Ø12	45°	SDMB26152	M3x7	T8	●	333822	200

SD-45° 内外倒角刀 Internal And External Chamfering



- 用于内外倒角加工, 端面槽加工
- 刀片形状为正方形, 使用时可转位4次, 更经济

- ★ For internal and external chamfering processing, end-groove.
- ★ Blade shape is square, use indexable four times more economical.

零配件 (Spare Parts): P01-P04

型号 Cat. No	尺寸 Size						刃数 No. of flutes	倒角范围 Chamfering range	角度 Angle	刀片 Insert	螺钉 Screw	扳手 Wrench	Stock	Order Number	Price (RMB)
	D	d	D1	L1	L	a									
SD-12-C16-110-1T	22	16	12	30	110	45°	1	Ø12~Ø22	45°	SDMB26152	M3x7	T8	●	333600	200
SD-25-C20-110-2T	25	20	15	30	110	45°	2	Ø15~Ø25	45°				●	333602	200
SD-20-C20-110-2T	30	20	22	30	110	45°	2	Ø22~Ø30	45°				●	333604	200
SD-30-C20-110-2T	40	20	30	30	110	45°	2	Ø30~Ø40	45°				●	333608	250
SD-40-C20-110-2T	50	20	40	30	110	45°	2	Ø40~Ø50	45°				●	333610	300

倒角刀

机夹式倒角刀 Machine clip chamfering cutter

APMT 直角台肩
有孔
铣削刀片

用途 Application	产品图片 Product Image	几何尺寸 Dimensioning	规格型号 Specification	尺寸 Dimension (mm)				配套刀柄 Matching Toolholder	BCD CBN-K CBN-S ZN60 ZK01 ZC32S ZC450 ZP150 ZP152 ZP153 ZP163
				rE	A	B	T		
直角台肩铣削 Right-Angle Milling			APKT 1135PDER-G2 1604PDER-G2	0.8 0.8	11 16.5	6.35 9.525	3.5 4.76	刀柄: (Toolholder) D14-D16, D48,D52	• •
直角台肩铣削 Right-Angle Milling			APKT 160402-AL 160404-AL 160408-AL	0.2 0.4 0.8	16.5 16.5 16.5	9.525 9.525 9.525	4.76 4.76 4.76	刀柄: (Toolholder) D14-D16, D48,D52	• • •
直角台肩铣削 Right-Angle Milling			APMT 1135PDER-M2 1604PDER-M2	0.8 0.8	11 16.5	6.35 9.525	3.5 4.76	刀柄: (Toolholder) D14-D16, D48,D52	• • • •
直角台肩铣削 Right-Angle Milling			APMT 1135PDER-H2 1604PDER-H2	0.8 0.8	11 16.5	6.35 9.525	3.5 4.76	刀柄: (Toolholder) D14-D16, D48,D52	• • • •

刀杆
刀盘

直角
台肩
立
铣刀

圆角
铣刀

球头
铣刀

钻铣
刀杆

倒角
刀杆

玉米
铣刀

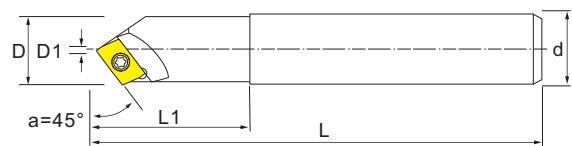
三
面刃
槽刀

快
进给
系列

龙门
平面
铣刀

锁
牙式
刀柄

SSK45° 舍弃式倒角刀 SSK45° Discarding Chamfering



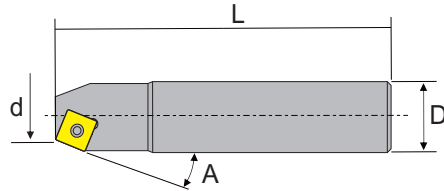
- 本铣刀可45° 切削，亦可做倒角，V槽切削
- 适合一般铣床，CNC铣床，CNC车床，钻床倒角

- ★ This cutter can be 45° cutting, chamfering can be done.
- ★ Suitable for general milling machine, integrated machining center.

零配件 (Spare Parts): P01-P04

型号 Cat. No	尺寸 Size						刃数 No. of flutes	倒角范围 Chamfering range	角度 Angle	刀片 Insert	螺钉 Screw	扳手 Wrench	Stock	Order Number	Price (RMB)
	D	d	D1	L1	L	a									
SSK-15-C12-110	15	12	5	30	110	45°	1	Ø5~Ø15	45°	AP..1135..	M2.5x6	T8	•	333710	200
SSK-16-C16-110	16	16	5	30	110	45°	1	Ø5~Ø16	45°				•	333712	200
SSK-20-C16-110	20	16	8	30	110	45°	1	Ø8~Ø20	45°	AP..1604..	M4x9	T15	•	333714	200
SSK-20-C20-130	20	20	8	30	130	45°	1	Ø8~Ø20	45°				•	333716	200
SSK-20-C20-200	20	20	8	30	200	45°	1	Ø8~Ø20	45°				•	333718	200
SSK-25-C25-120	25	25	10	30	120	45°	1	Ø10~Ø25	45°				•	333720	300

■ BMC/MC 倒角刀 BMC/MC Chamfering



零配件 (Spare Parts): P01-P04

● 多种角度, 适用孔背及反边倒角, 减少二次装夹, 省时高效!

★ A Variety Of Angles, Applicable Hole Back And The Edge Chamfer, Reduce Secondary Clamping, Time Efficient!

型号 Cat. No	尺寸 Size				刀片 Insert	螺钉 Screw	扳手 Wrench	Stock	Order Number	Price (RMB)
	直径 d	倒角角度 A	柄径 D	总长 L						
BMC09-3015D-C20-150	30	15	20	150	SDMT090308	M4x9	T10	●	333200	350
BMC09-3030D-C20-150	30	30	20	150					333202	350
BMC09-3045D-C20-150	30	45	20	150					333204	400
BMC09-3060D-C20-150	30	60	20	150					333206	400
MC09-1215D-C20-135	12	15	20	135					333208	300
MC09-1230D-C20-135	12	30	20	135					333210	300
MC09-1245D-C20-135	12	45	20	135					333212	350
MC09-1260D-C20-135	12	60	20	135					333214	350

刀杆 刀盘

直角
台肩
立
铣刀

圆角
铣刀

球头
铣刀

钻铣
刀杆

倒角
刀杆

玉米
铣刀

三
面刃
槽刀

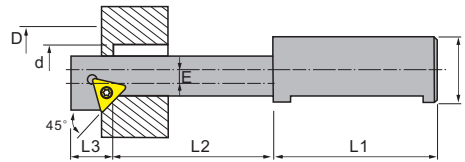
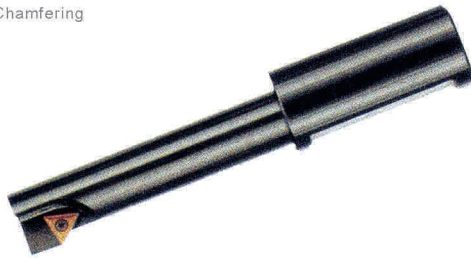
快
进给
系列

龙门
平面
铣刀

锁
牙式
刀柄

■ 倒拉倒角刀 Inverted Chamfering

Inverted Chamfering



零配件 (Spare Parts): P01-P04

● 不用正反转, 减少损坏概率

● 特殊设计本体刚性最佳

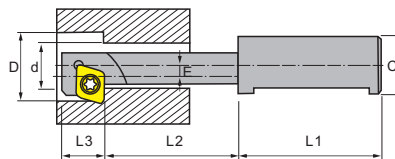
★ No need for reverse running of spindles that minimizes defect of tool.

★ Specially designed body gives maximum rigidity.

型号 Cat. No	尺寸 Size							刀片 Insert	螺钉 Screw	扳手 Wrench	Stock	Order Number	Price (RMB)
	D	d	C	L1	L2	L3	E						
BC-2014	20	14	16	48	40	13	3.2	TCMT110204 TCGT110204	M2.5x6.5	T8	●	333100	260
BC-2317	23	17	20	50	50	13	3.2					333102	260
BC-2721	27	21	25	56	70	13	3.2					333104	380
BC-3124	31	24	25	56	80	13	3.7					333106	380

■ 倒拉沉头刀 Inverted Countersunk Head

Inverted Countersunk Head



零配件 (Spare Parts): P01-P04

● 减少二次加工, 增加微调机构
● 不用正反转, 减少损坏概率
● 特殊设计本体刚性最佳

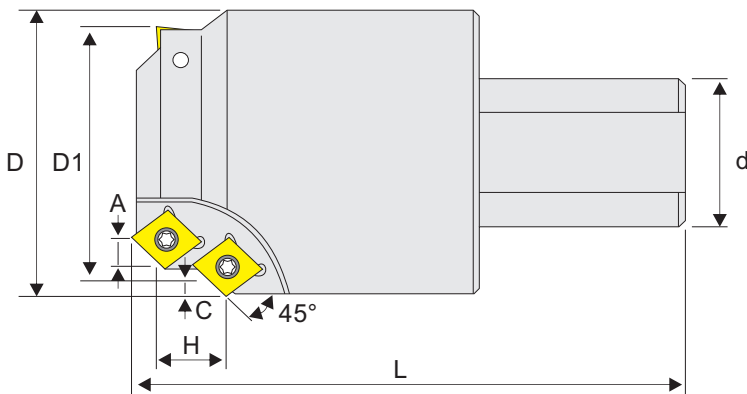
型号 Cat. No	尺寸 Size							刀片 Insert	螺钉 Screw	扳手 Wrench	Stock	Order Number	Price (RMB)
	D	d	C	L1	L2	L3	E						
M10-1810	18	10.5	16	48	35	13	4	CCMT060204 CCGT060204	M2.5x6.5	T8	●	333900	200
M12-2013	20	13	16	48	10	13	3.85					333902	200
M16-2617	26	17	20	50	50	13	4.85	CCMT09T308 CCGT09T308	M4x9	T15	●	333904	300
M20-3321	33	21	25	56	70	13	6.4					333906	300
M24-4025	40	25	25	56	80	13	7.9					333908	300

倒角刀

机夹式倒角刀 Machine clip chamfering cutter

■ CA 双倒角沉头刀

CA Double Chamfer Countersunk Head Cutter



刀杆
刀盘

直角
台肩
立
铣刀

圆角
铣刀

球头
铣刀

钻铣
刀杆

倒角
刀杆

玉米
铣刀

三
面刃
槽刀

快
进给
系列

龙
门
平
面
铣
刀

锁
牙
式
刀
柄

零配件 (Spare Parts): P01-P04

型号 Cat. No	刀具 直径 D	底孔 直径 D1	沉孔 深度 H	倒角 尺寸 A	倒角 尺寸 C	柄部 直径 d	总长 L	螺钉 Screw 	扳手 Wrench 	刀片 Insert 	Stock	Order Number	Price (RMB)
CA1218-6.5	18	12	6.5	0.8	0.8	25	100	T8	M2.5X6	CCMT 0602..	•	333920	365
CA1521-6.5	21	15	6.5	1.0	0.8	25	120				•	333922	365
CA1622-6.5	22	16	6.5	1.0	0.8	25	120				•	333924	365
CA2026-6.5	26	20	6.5	1.0	0.8	25	120				•	333926	365
CA2026-8.5	26	20	8.5	1.0	0.8	25	120				•	333928	365
CA2531-6.5	31	25	6.5	1.0	0.8	32	120	T15	M4.0X9	CCMT 09T3..	•	333930	365
CA2531-8.5	31	25	8.5	1.0	0.8	32	120				•	333932	365
CA2531-10.5	31	25	10.5	1.0	0.8	32	120				•	333934	365
CA3036-8.5	36	30	8.5	1.0	0.8	32	120				•	333936	365
CA3036-10.5	36	30	10.5	1.0	0.8	32	120				•	333938	365
CA3541-8.5	41	35	8.5	1.0	0.8	32	120				•	333940	433
CA3541-10.5	41	35	10.5	1.0	0.8	32	120				•	333942	433
CA4046-10.5	46	40	10.5	1.0	0.8	32	120				•	333944	500
CA4248-10.5	48	42	10.5	1.0	0.8	32	120				•	333946	500
CA4552-10.5	52	45	10.5	1.0	0.8	32	120				•	333948	548
CA4855-10.5	55	48	10.5	1.0	0.8	32	120				•	333950	548
CA5057-12.5	57	50	12.5	1.0	0.8	32	120				•	333952	548
CA5562-10.5	62	55	10.5	1.0	0.8	32	120				•	333954	548
CA6067-15.5	67	60	15.5	1.0	0.8	40	130				•	333956	705
CA7077-12.5	77	70	12.5	1.0	0.8	40	130				•	333958	820
CA7077-15.5	77	70	15.5	1.0	0.8	40	130				•	333960	820
CA8088-15.5	88	80	15.5	1.0	0.8	40	130				•	333962	978
CA8088-20.5	88	80	20.5	1.0	0.8	40	130				•	333964	978
CA9098-20.5	98	90	20.5	1.0	0.8	40	130				•	333966	1115